



**ÖZKA**

**PRODUCT  
CATALOGUE**

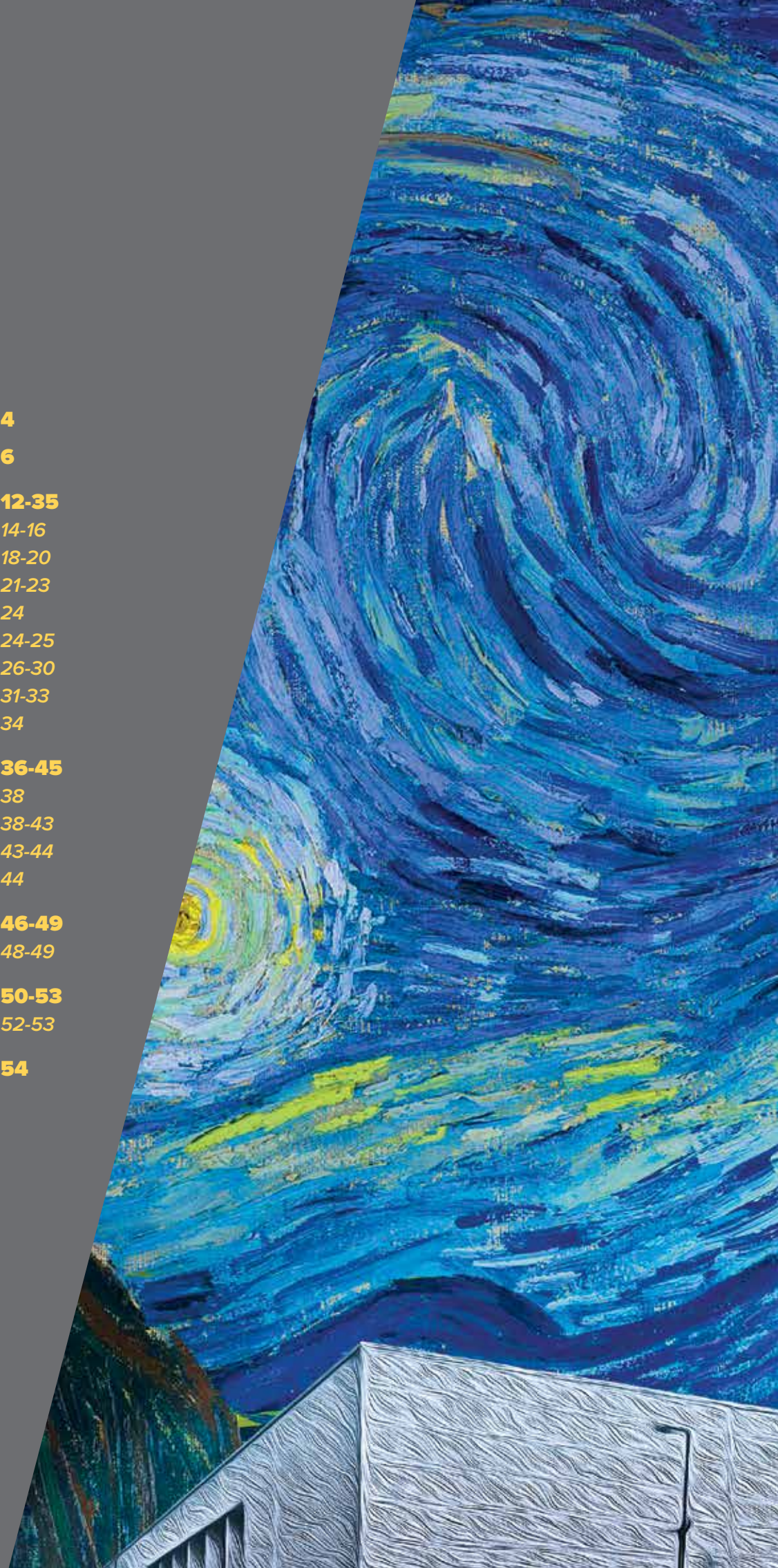




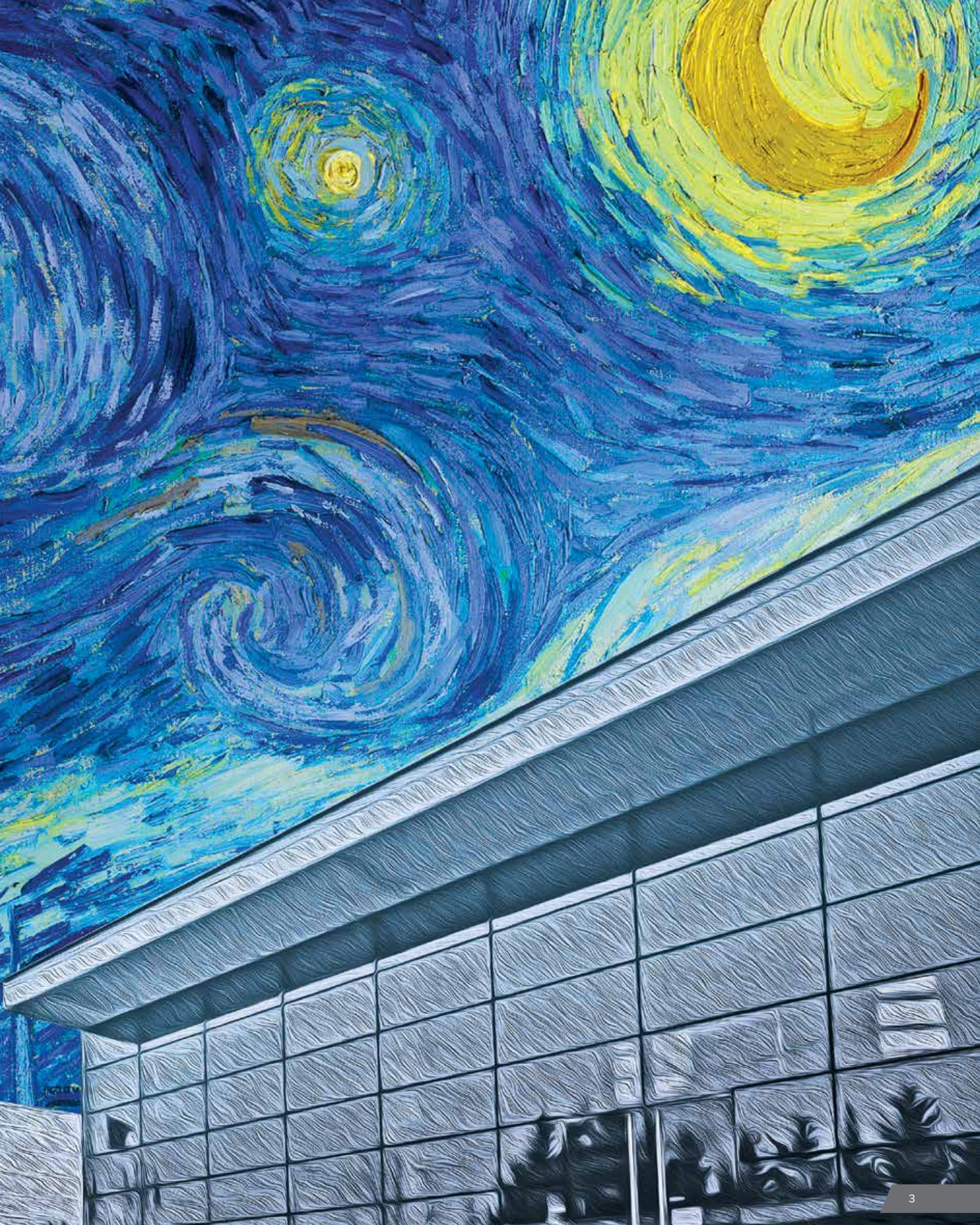


## INDEX

<b>ABOUT US</b>	<b>4</b>
<b>TYRE READING INFORMATION</b>	<b>6</b>
<b>AGRICULTURAL TYRES</b>	<b>12-35</b>
<i>Radial Tractor Tyres</i>	14-16
<i>Front Tractor Tyres</i>	18-20
<i>Rear Tractor Tyres</i>	21-23
<i>Irrigation Tyres</i>	24
<i>Harvester Tyres</i>	24-25
<i>Flotation Tyres</i>	26-30
<i>Implement Tyres</i>	31-33
<i>Forestry Tyres</i>	34
<b>INDUSTRIAL, EM, OTR TYRES</b>	<b>36-45</b>
<i>Radial Em Tyres</i>	38
<i>Em / Industrial Tyres</i>	38-43
<i>Compactor Tyres</i>	43-44
<i>Forklift Tyres</i>	44
<b>LCV TYRES</b>	<b>46-49</b>
<i>Light Truck &amp; Minibus Tyres</i>	48-49
<b>MPT TYRES</b>	<b>50-53</b>
<i>Military Tyres</i>	52-53
<b>CORRESPONDING TYRES SIZE</b>	<b>54</b>









## ABOUT US

ÖZKA Tyre has been established in 1994. It has determined its vision as a leader brand in Turkey market, and as a reputable brand in the global market. It has made its policies and objectives clear, with its strategic plans, which are carried out in a professional manner.

In 2004, ÖZKA has been transferred has to its new facility, in accordance to its vision. Thanks to this, ÖZKA was able to increase its investments in different tyre groups such as Yard / Field, Pickup / Minibus, Trailer, Tractor Front – Rear, Caterpillar, Harvester, Forklift, Panzer, and Radial Tractor tyres. Thus, ÖZKA managed to become the biggest tyre factory in Turkey.

ÖZKA, which works with more than 400 contracted dealers in Turkey, is on the way to become a world brand providing its high-quality products to more than 84 countries around the world.

With its strong, reliable and durable tyres appropriate with national and international standards (TSE, ETRTO, ECE) ÖZKA, considers customer satisfaction before and after sales as the fundamental principle. With its Technical Services Team, it responds to proposals, solves complaints and meets requests of customers all around the world in a short time.

ÖZKA, officially certificated as R&D Center since 2017, produces its products with its expertise as a result of innovative works of R&D Center team. It internalises Total Quality Managements and Practises; ISO 9001, ISO 14001, OHSAS 18001 ve ISO 27001. Thus, it provides product quality, and product safety from raw material procurement to post-shipment controls.

ÖZKA has signed Global Principles Agreement, and revealed its susceptibility about social responsibilities. While continuously increasing its employment, ÖZKA acts according to the legislative regulations about environment, and work safety. By recycling process scraps, ÖZKA creates added-value for global environment, and economy. Thanks to this approach, it exhibits its difference in the industry.

ÖZKA, which has about 900 employees, considers human resources as the basis of sustainable growth, and keeps its investments for further improvements. It plans, and practices the attending of its employees to domestic and abroad events; such as expos, workshops and trainings in order to follow the sectoral developments and innovations.

## OUR CERTIFICATES



OCCUPATIONAL HEALTH AND SAFETY MANAGEMENT



ENVIRONMENTAL MANAGEMENT SYSTEM



QUALITY MANAGEMENT SYSTEM



INFORMATION SECURITY MANAGEMENT SYSTEM



TURKISH STANDARDS INSTITUTE

# ***INSPIRED FROM VAN GOGH***

*When you look at Van Gogh's painting,  
you see passion, emotion,  
excellence and professionalism.*

*We have the same passion  
as he had to make a difference on his works.*

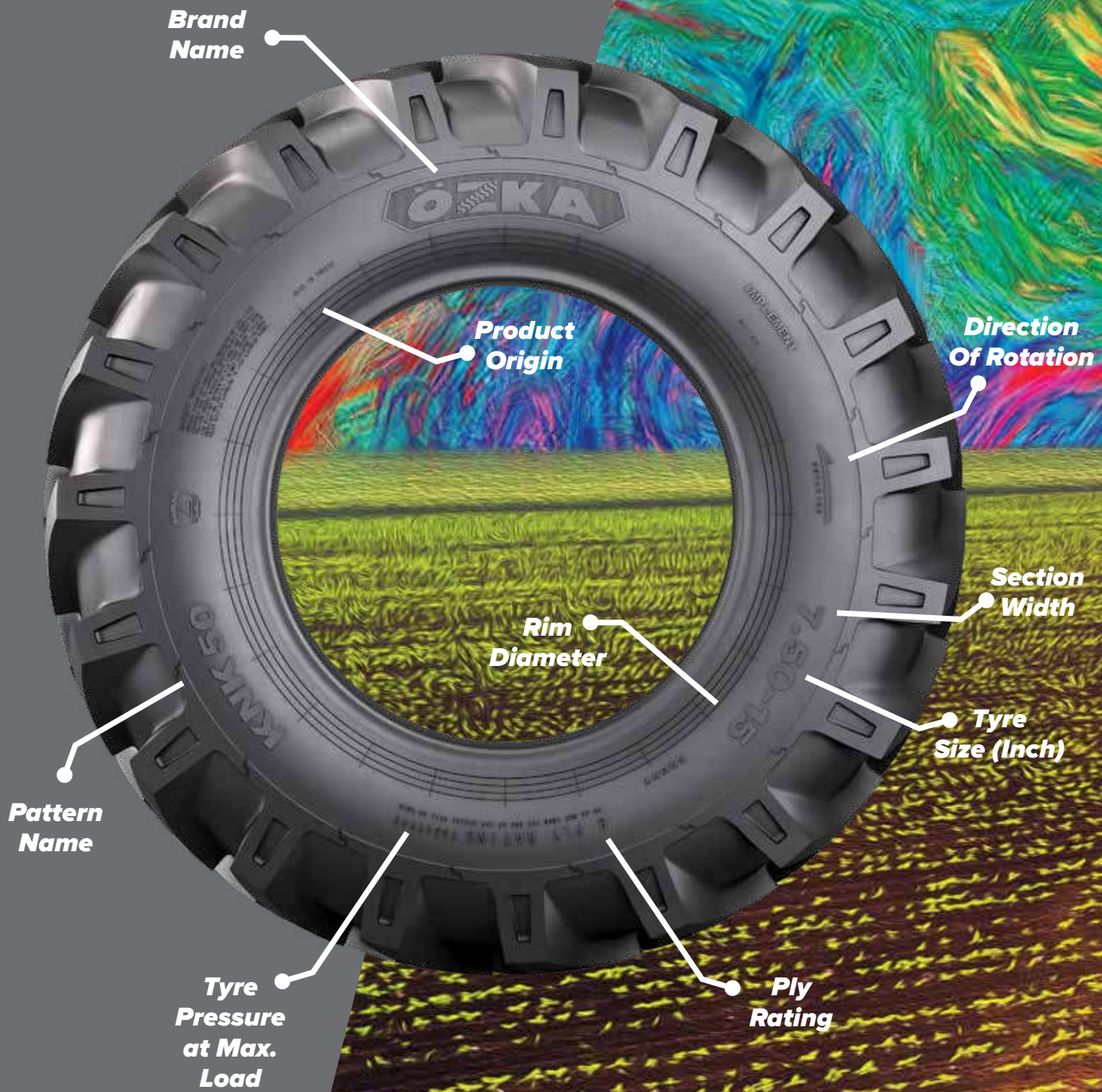
*That's why, this catalogue is inspired  
by his paintings and drawings.*

*Regards.*

**ÖZKA**



# TYRE READING INFORMATION









**RADIAL TRACTOR TYRES**



**AGR010**

**AGR011**

**FRONT TRACTOR TYRES**



**KNK30**

**KNK32**

**KNK33**

**KNK35**

**KNK50**

**REAR TRACTOR TYRES**



**KNK50**

**KNK53**

**IRRIGATION TYRES**



**KNK55**

**HARVESTER TYRES**



**KNK36**

**KNK48**

**KNK50**

**FLOTATION TYRES**



**KNK22**

**KNK25**

**KNK26**

**KNK27**

**KNK28**

**KNK42**

**KNK46**



**KNK48**

**KNK52**

**KNK56**







**IMPLEMENT TYRES**

**FORESTRY TYRES**



**KNK42**

**KNK48**

**KNK50**

**KNK52**

**KNK54**

**KNK140**

**FRS40**

**RADIAL EM TYRES**

**EM / INDUSTRIAL TYRES**



**OR71**

**KNK44**

**KNK65**

**KNK66**

**IND80**

**IND85**

**IND88**

**EM / INDUSTRIAL TYRES**

**COMPACTOR TYRES**

**FORKLIFT TYRES**



**KNK70**

**KNK72**

**KNK74**

**KNK77**

**KNK88**

**KNK40**

**LIGHT TRUCK & MINIBUS TYRES**

**MILITARY TYRES**



**KNK20**

**KNK24**

**KNK25**

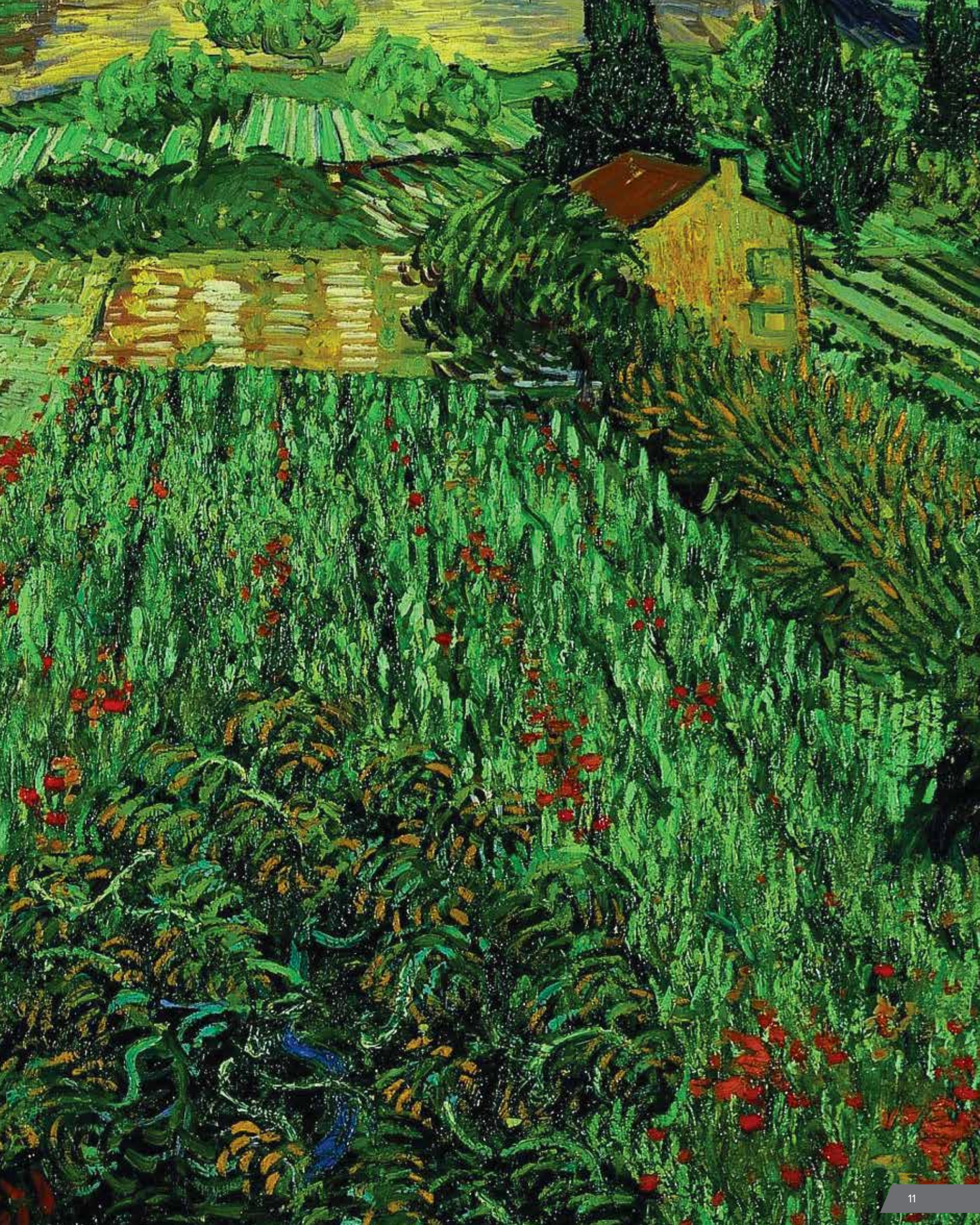
**KNK126**

**KNK10**

**KNK12**

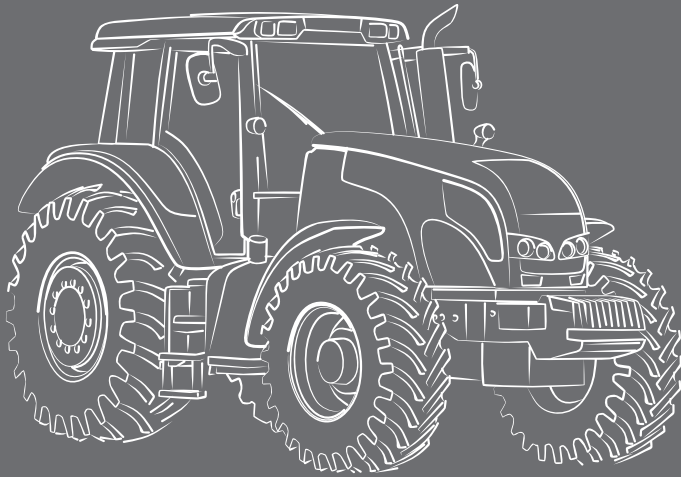
**KNK14**







# AGRICULTURAL TYRES



**AGR010**   **AGR011**   **KNK30**   **KNK32**

**KNK33**   **KNK35**   **KNK50**   **KNK53**

**KNK55**   **KNK36**   **KNK48**   **KNK26**

**KNK27**   **KNK22**   **KNK25**   **KNK28**

**KNK42**   **KNK52**   **KNK56**   **KNK46**

**KNK54**   **KNK140**   **FRS40**

**ÖZKA**







**RADIAL  
TRACTOR TYRES**

**AGRO10**



- Comfortable drive due to flexible sidewall structure
- Mud repellent feature with its specially designed tread pattern
- High performance due to deep treads and wide base track

Inflated Unloaded Dimensions

Load & Pressure

Product Code	Tyre Size / Ply Rating	TT/TL	Inflated Unloaded Dimensions		Load Index	Speed Index	Load & Pressure			
			Section Width (mm)	Overall Diameter (mm)			Tyre Load Capacity (Kg)	Tyre Pressure At Max. Load (Psi)	Dynamic Rolling Circumference (mm)	Static Loaded Radius (mm)
R6524440	440/65 R24	TL	445	1185	128/131	D/A8	1800/1950	35	3542	535
R6524480	480/65 R24	TL	480	1235	133/136	D/A8	2060/2240	35	3683	555
R6524540	540/65 R24	TL	550	1320	146/149	D/A8	3000/3250	34	3924	589
R6526750	750/65 R26	TL	755	1640	166/163	A8/B	5300/4875	34	4844	722
R6528440	440/65 R28	TL	445	1285	131/134	D/A8	1950/2120	35	3857	585
R6528480	480/65 R28	TL	480	1337	142/145	D/A8	2650/2900	35	4004	606
R6528540	540/65 R28	TL	550	1420	149/152	D/A8	3250/3550	35	4238	639
R6528600	600/65 R28	TL	591	1491	154/157	D/A8	3750/4125	34	4439	668
R6530540	540/65 R30	TL	550	1470	150/153	D/A8	3350/3650	34	4396	664
R6532800	800/65 R32	TL	800	1858	178/175	A8/B	7500/6900	46	5509	824
R6534540	540/65 R34	TL	550	1575	152/155	D/A8	3550/3875	34	4725	716
R6538540	540/65 R38	TL	550	1675	153/156	D/A8	3650/4000	34	5039	767
R6538600	600/65 R38	TL	595	1750	159/162	D/A8	4375/4750	35	5251	797
R6538650	650/65 R38	TL	650	1820	163/166	D/A8	4875/5300	34	5449	825
R6542650	650/65 R42	TL	650	1913	165/168	D/A8	5150/5600	34	5744	872
R7016240	240/70 R16	TL	245	745	104/104	A8/B	900/900	34	2234	339
R7016260	260/70 R16	TL	260	770	109/109	A8/B	1030/1030	34	2305	349
R7016280	280/70 R16	TL	282	798	112/112	A8/B	1120/1120	34	2384	360
R7018280	280/70 R18	TL	282	849	114/114	A8/B	1180/1180	34	2544	385
R7020260	260/70 R20	TL	260	875	113/113	A8/B	1150/1150	34	2634	401
R7020280	280/70 R20	TL	282	900	116/116	A8/B	1250/1250	34	2704	411
R7020300	300/70 R20	TL	295	952	120/117	A8/B	1400/1285	34	2851	432
R7020320	320/70 R20	TL	319	982	113/113	A8/B	1150/1150	23	2936	444
R7020360	360/70 R20	TL	357	1042	129/129	A8/B	1850/1850	34	3106	468
R7020380	380/70 R20	TL	380	1082	122/122	A8/B	1500/1500	23	3219	484
R7024320	320/70 R24	TL	319	1095	116/116	A8/B	1250/1250	23	3288	499
R7024360	360/70 R24	TL	357	1152	122/122	A8/B	1500/1500	23	3449	522
R7024380	380/70 R24	TL	380	1190	125/125	A8/B	1650/1650	23	3556	537
R7024420	420/70 R24	TL	418	1248	130/130	A8/B	1900/1900	23	3720	560
R7024460	460/70 R24	TL	460	1260	152/149	A8/B	3550/3250	23	3754	565
R7024480	480/70 R24	TL	480	1320	138/135	A8/B	2360/2180	23	3924	589
R7026480	480/70 R26	TL	480	1380	139/136	A8/B	2430/2240	23	4109	618
R7028360	360/70 R28	TL	357	1255	125/125	A8/B	1650/1650	23	3772	573
R7028380	380/70 R28	TL	380	1293	127/127	A8/B	1750/1750	23	3879	588
R7028420	420/70 R28	TL	418	1351	133/133	A8/B	2060/2060	23	4043	612
R7028480	480/70 R28	TL	480	1425	140/140	A8/B	2500/2500	23	4253	641
R7030420	420/70 R30	TL	418	1400	134/131	A8/B	2120/1950	23	4198	636
R7030480	480/70 R30	TL	480	1480	141/138	A8/B	2575/2360	23	4424	668
R7030600	600/70 R30	TL	595	1605	158/156	A8/B	4250/4000	34	4777	718
R7034480	480/70 R34	TL	479	1580	143/140	A8/B	2725/2500	23	4739	718
R7034520	520/70 R34	TL	516	1640	148/146	A8/B	3150/3000	23	4908	742
R7038480	480/70 R38	TL	480	1685	145/142	A8/B	2900/2650	23	5067	771
R7038520	520/70 R38	TL	516	1750	150/147	A8/B	3350/3075	23	5251	797
R7038580	580/70 R38	TL	580	1830	155/152	A8/B	3875/3550	23	5477	829
R7038710	710/70 R38	TL	720	1965	171/174	D/A8	6150/6700	34	5859	883
R7042710	710/70 R42	TL	720	2061	173/176	D/A8	6500/7100	34	6162	931

**65 SERIES**

**70 SERIES**



# RADIAL TRACTOR TYRES

# AGRO10

AGRICULTURAL TYRES

Product Code	Tyre Size / Ply Rating	TT/TL	Inflated Unloaded Dimensions		Load & Pressure						
			Section Width	Overall Diameter	Load Index	Speed Index	Tyre Load Capacity	Tyre Pressure At Max. Load	Dynamic Rolling Circumference	Static Loaded Radius	
			(mm)	(mm)			(Kg)	(Psi)	(mm)	(mm)	
80 SERIES	R8042480	480/80 R42	TL	485	1845	151/148	A8/B	3450/3150	23	5552	845
	R8046480	480/80 R46	TL	485	1945	164/164	A8/B	5000/5000	46	5866	895
85 SERIES	R8520280	280/85 R20 (11.2 R20)	TL	282	984	112/109	A8/B	1120/1030	23	2942	444
	R8520320	320/85 R20 (12.4 R20)	TL	319	1052	119/116	A8/B	1360/1250	23	3134	472
	R8524280	280/85 R24 (11.2 R24)	TL	282	1086	115/112	A8/B	1215/1120	23	3262	495
	R8524320	320/85 R24 (12.4 R24)	TL	319	1154	122/119	A8/B	1500/1360	23	3454	523
	R8524340	340/85 R24 (13.6 R24)	TL	343	1188	125/122	A8/B	1650/1500	23	3551	536
	R8524380	380/85 R24 (14.9 R24)	TL	380	1256	131/128	A8/B	1950/1800	23	3743	563
	R8524420	420/85 R24 (16.9 R24)	TL	418	1324	137/134	A8/B	2300/2060	23	3935	591
	R8528280	280/85 R28 (11.2 R28)	TL	282	1187	118/115	A8/B	1320/1215	23	3580	546
	R8528320	320/85 R28 (12.4 R28)	TL	320	1255	124/121	A8/B	1600/1450	23	3772	573
	R8528340	340/85 R28 (13.6 R28)	TL	343	1289	127/124	A8/B	1750/1600	23	3868	587
	R8528380	380/85 R28 (14.9 R28)	TL	380	1357	133/130	A8/B	2060/1900	23	4060	614
	R8528420	420/85 R28 (16.9 R28)	TL	418	1425	139/136	A8/B	2430/2240	23	4253	641
	R8530380	380/85 R30 (14.9 R30)	TL	380	1408	135/132	A8/B	2180/2000	23	4220	639
	R8530420	420/85 R30 (16.9 R30)	TL	418	1476	140/137	A8/B	2500/2300	23	4413	667
	R8530460	460/85 R30 (18.4 R30)	TL	455	1544	145/142	A8/B	2900/2650	23	4605	694
	R8532320	320/85 R32 (12.4 R32)	TL	320	1365	126/126	A8/B	1700/1700	34	4115	627
	R8534420	420/85 R34 (16.9 R34)	TL	418	1578	142/139	A8/B	2650/2430	23	4733	718
	R8534460	460/85 R34 (18.4 R34)	TL	455	1646	147/144	A8/B	3075/2800	23	4925	745
	R8536320	320/85 R36 (12.4 R36)	TL	320	1465	128/125	A8/B	1800/1650	23	4429	677
	R8536340	340/85 R36 (13.6 R36)	TL	343	1495	132/129	A8/B	2000/1850	23	4514	689
	R8538320	320/85 R38 (12.4 R38)	TL	320	1515	143/143	A8/B	2725/2725	52	4587	703
	R8538340	340/85 R38 (13.6 R38)	TL	343	1545	133/130	A8/B	2060/1900	23	4672	715
R8538380	380/85 R38 (14.9 R38)	TL	380	1611	139/136	A8/B	2430/2240	23	4858	741	
R8538420	420/85 R38 (16.9 R38)	TL	418	1679	144/141	A8/B	2800/2575	23	5050	768	
R8538460	460/85 R38 (18.4 R38)	TL	455	1747	149/146	A8/B	3250/3000	23	5243	795	
R8538520	520/85 R38 (20.8 R38)	TL	516	1849	155/152	A8/B	3875/3550	23	5531	836	
R8538650	650/85 R38	TL	650	2071	173/176	D/A8	6500/7100	34	6159	925	
R8542520	520/85 R42 (20.8 R42)	TL	516	1955	157/157	A8/B	4125/4125	23	5863	889	
R8546340	340/85 R46 (13.6 R46)	TL	345	1756	150/151	D/A8	3350/3450	52	5332	819	
R8548340	340/85 R48 (13.6 R48)	TL	343	1800	151/152	D/A8	3450/3550	58	5472	842	
90 SERIES	R9046320	320/90 R46	TL	320	1750	146/146	A8/B	3000/3000	46	5315	817
	R9046380	380/90 R46	TL	380	1860	159/162	D/A8	4375/4750	58	5626	861
	R9050320	320/90 R50	TL	320	1850	150/150	A8/B	3350/3350	52	5630	867
	R9054320	320/90 R54	TL	320	1950	155/155	A8/B	3875/3875	58	5944	917
95 SERIES	R9520	9.5 R20	TL	241	938	108/105	A8/B	1000/925	23	2812	426
	R9532210	210/95 R32	TL	215	1215	114/114	A8/B	1180/1180	34	3691	567
	R9532230	230/95 R32	TL	230	1255	128/128	A8/B	1800/1800	58	3804	583
	R9532270	270/95 R32	TL	275	1330	136/136	A8/B	2240/2240	58	4016	613
	R9536210	210/95 R36	TL	215	1320	118/118	A8/B	1320/1320	34	4019	619
	R9536230	230/95 R36	TL	230	1355	130/130	A8/B	1900/1900	58	4118	633
	R9536270	270/95 R36	TL	275	1435	139/139	A8/B	2430/2430	58	4345	665
	R9538270	270/95 R38	TL	275	1485	140/140	A8/B	2500/2500	58	4502	691
	R9542230	230/95 R42	TL	230	1505	133/136	D/A8	2060/2240	58	4590	709
	R9544210	210/95 R44	TL	215	1520	120/120	A8/B	1400/1400	34	4649	720
	R9544230	230/95 R44	TL	230	1560	132/132	A8/B	2000/2000	58	4762	736
	R9544270	270/95 R44	TL	275	1635	142/142	A8/B	2650/2650	58	4974	766
	R9546270	270/95 R46	TL	275	1685	143/143	A8/B	2725/2725	58	5131	791
	R9546300	300/95 R46	TL	300	1740	148/148	A8/B	3150/3150	58	5287	813
	R9548230	230/95 R48	TL	230	1660	136/136	A8/B	2240/2240	58	5077	786
	R9548270	270/95 R48	TL	275	1735	144/144	A8/B	2800/2800	58	5289	816
R9552300	300/95 R52	TL	300	1900	156/159	D/A8	4000/4375	58	5787	892	
R9554270	270/95 R54	TL	275	1885	146/146	A8/B	3000/3000	58	5761	891	



**RADIAL  
TRACTOR TYRES**

**AGRO11**



- Comfortable drive due to flexible sidewall structure
- Mud repellent feature with its specially designed tread pattern
- High performance due to deep treads and wide base track

	Product Code	Tyre Size / Ply Rating	TT/TL	Inflated Unloaded Dimensions				Load & Pressure			
				Section Width	Overall Diameter	Load Index	Speed Index	Tyre Load Capacity	Tyre Pressure At Max. Load	Dynamic Rolling Circumference	Static Loaded Radius
				(mm)	(mm)			(Kg)	(Psi)	(mm)	(mm)
<b>70 SERIES</b>	R704262011	620/70 R42	TL	625	1935	166/166	A8/B	5300/5300	46	5806	881
<b>75 SERIES</b>	R752662011	620/75 R26	TL	630	1600	166/166	A8/B	5300/5300	46	4731	706
	R753062011	620/75 R30	TL	630	1695	163/161	A8/B	4875/4625	35	5032	754
	R753265011	650/75 R32	TL	650	1795	172/172	A8/B	6300/6300	46	5331	799



# BUILT ON EXPERTISE

AGRICULTURAL TYRES



**ÖZKA** TYRES  
Agricultural and Industrial Tyres





**FRONT  
TRACTOR TYRES**

**KNK30**

- Tractor front tyre for general use
- Resistance to stone and impacts thanks to strong and robust body
- Smooth driving with gutters at central back
- Prevention of skidding thanks to treads in shoulders
- Long lasting and economic use
- Excellent performance in highway and land

Inflated Unloaded Dimensions

Load & Pressure

Product Code	Tyre Size / Ply Rating	TT/TL	Section Width	Overall Diameter	Load Index	Speed Index	Tyre Load Capacity	Tyre Pressure At Max. Load	Dynamic Rolling Circumference	Static Loaded Radius	
			(mm)	(mm)			(Kg)	(Psi)	(mm)	(mm)	
<b>KNK30</b>	3102	6.00-16 6PR	TT	165	735	88	A6	560	48	2206	335
	3103	6.00-16 8PR	TT	165	735	93	A6	650	48	2206	335
	3202	6.50-16 6PR	TT	175	760	91	A6	615	45	2277	345
	3203	6.50-16 8PR	TT	175	760	97	A6	730	54	2277	345
	3402	7.50-16 6PR	TT	205	805	98	A6	750	41	2404	363
	3403	7.50-16 8PR	TT	205	805	103	A6	875	54	2404	363



**FRONT  
TRACTOR TYRES**

**KNK32**

- Long lasting front tractor tyre
- High maneuverability thanks to nondirectional use feature
- Resistant structure against punctures thanks to increased tread depth

Inflated Unloaded Dimensions

Load & Pressure

Product Code	Tyre Size / Ply Rating	TT/TL	Section Width	Overall Diameter	Load Index	Speed Index	Tyre Load Capacity	Tyre Pressure At Max. Load	Dynamic Rolling Circumference	Static Loaded Radius	
			(mm)	(mm)			(Kg)	(Psi)	(mm)	(mm)	
<b>KNK32</b>	3412	7.50-16 6PR	TT	205	805	98	A6	750	41	2404	363
	3413	7.50-16 8PR	TT	205	805	103	A6	875	54	2404	363
	3513	7.50-18 8PR	TT	205	860	106	A6	950	54	2575	390
	3553	6.50-20 8PR	TT	175	865	102	A6	850	54	2605	397
	3603	7.50-20 8PR	TT	205	915	108	A6	1000	49	2747	417





**FRONT  
TRACTOR TYRES**

**KNK33**

- Extra strong with its increased tread depth
- Comfortable driving in the field and on the road by pattern design
- Mud-free pattern

**KNK33**

**Inflated Unloaded Dimensions**

**Load & Pressure**

Product Code	Tyre Size / Ply Rating	TT/TL	Section Width	Overall Diameter	Load Index	Speed Index	Tyre Load Capacity	Tyre Pressure At Max. Load	Dynamic Rolling Circumference	Static Loaded Radius
			(mm)	(mm)			(Kg)	(Psi)	(mm)	(mm)
3132	6.00-16 6PR	TT	165	735	88	A6	560	48	2206	335
3133	6.00-16 8PR	TT	165	735	93	A6	650	48	2206	335
3232	6.50-16 6PR	TT	175	760	91	A6	615	45	2277	345
3233	6.50-16 8PR	TT	175	760	97	A6	730	54	2277	345
3472	7.50-16 6PR	TT	205	805	98	A6	750	41	2404	363
3473	7.50-16 8PR	TT	205	805	103	A6	875	54	2404	363
3542	6.00-19 6PR	TT	165	814	93	A6	650	48	2453	374



**FRONT  
TRACTOR TYRES**

**KNK35**

- Suitable to asphalt and land usage
- Excellent maneuverability and nondirectional use
- Resistant structure against punctures
- Straight movement stability in soft land

**KNK35**

**Inflated Unloaded Dimensions**

**Load & Pressure**

Product Code	Tyre Size / Ply Rating	TT/TL	Section Width	Overall Diameter	Load Index	Speed Index	Tyre Load Capacity	Tyre Pressure At Max. Load	Dynamic Rolling Circumference	Static Loaded Radius
			(mm)	(mm)			(Kg)	(Psi)	(mm)	(mm)
3052	5.50-16 6PR	TT	150	710	86	A6	530	54	2135	325
3112	6.00-16 6PR	TT	165	735	88	A6	560	48	2206	335
3113	6.00-16 8PR	TT	165	735	93	A6	650	48	2206	335
3212	6.50-16 6PR	TT	175	760	91	A6	615	45	2277	345
3213	6.50-16 8PR	TT	175	760	97	A6	730	54	2277	345
3432	7.50-16 6PR	TT	205	805	98	A6	750	41	2404	363
3433	7.50-16 8PR	TT	205	805	103	A6	875	54	2404	363
3463	9.00-16 8PR	TT	234	855	111	A6	1090	45	2545	383
3483	10.00-16 8PR	TT	274	895	115	A6	1215	41	2658	399
3493	11.00-16 8PR	TT	315	965	118	A6	1320	36	2856	427
3503	7.50-18 8PR	TT	205	860	106	A6	950	54	2575	390





**FRONT  
TRACTOR TYRES**

**KNK50**

- High traction
- Easy movement ability with anti-ground feature
- Preventing clusters in the center and sidewalls during movement
- Facilitating releasing of muds thanks to windowed blocks

Inflated Unloaded Dimensions

Load & Pressure

Product Code	Tyre Size / Ply Rating	TT/TL	Inflated Unloaded Dimensions		Load Index	Speed Index	Load & Pressure			
			Section Width (mm)	Overall Diameter (mm)			Tyre Load Capacity (Kg)	Tyre Pressure At Max. Load (Psi)	Dynamic Rolling Circumference (mm)	Static Loaded Radius (mm)
3003	7.50-15 8PR	TT	205	780	99	A6	775	52	2325	350
3122	6.00-16 6PR	TT	165	735	88	A6	560	48	2206	335
3123	6.00-16 8PR	TT	165	735	93	A6	650	48	2206	335
3222	6.50-16 6PR	TT	175	760	91	A6	615	45	2277	345
3223	6.50-16 8PR	TT	175	760	97	A6	730	54	2277	345
3423	7.50-16 8PR	TT	205	805	103	A6	875	54	2404	363
3523	7.50-18 8PR	TT	205	860	106	A6	950	54	2575	390
3623	7.50-20 8PR	TT	205	915	108	A6	1000	49	2747	417
3652	9.5-20 6PR	TT	241	940	101	A6	825	30	2818	427
3653	9.5-20 8PR	TT	241	940	106	A6	950	35	2817	427
3663	9.5-20 8PR	TL	241	940	106	A6	950	35	2817	427
3673	11.2-20 8PR	TT	285	1005	113	A6	1150	38	3001	453
3683	11.2-20 8PR	TL	285	1005	113	A6	1150	38	3001	453

**KNK50**



# REAR TRACTOR TYRES

# KNK50



- High traction
- Easy movement ability with anti-ground feature
- Preventing clusters in the center and sidewalls during movement
- Facilitating releasing of muds thanks to windowed blocks

### Inflated Unloaded Dimensions

### Load & Pressure

Product Code	Tyre Size / Ply Rating	TT/TL	Inflated Unloaded Dimensions		Load Index	Speed Index	Load & Pressure			
			Section Width (mm)	Overall Diameter (mm)			Tyre Load Capacity (Kg)	Tyre Pressure At Max. Load (Psi)	Dynamic Rolling Circumference (mm)	Static Loaded Radius (mm)
5002	8.3-24 6PR	TT	210	1009	105	A6	925	30	3044	465
5003	8.3-24 8PR	TT	210	1009	108	A6	1000	35	3044	465
5102	9.50-24 6PR	TT	241	1050	110	A6	1060	26	3160	481
5103	9.50-24 8PR	TT	241	1050	116	A6	1250	34	3160	481
5112	11.2-24 6PR	TT	284	1105	110	A6	1060	26	3316	503
5113	11.2-24 8PR	TT	284	1105	116	A6	1250	34	3316	503
5115	11.2-24 12PR	TT	284	1105	122	A6	1500	40	3316	503
5122	12.4-24 6PR	TT	315	1160	115	A6	1215	24	3471	525
5123	12.4-24 8PR	TT	315	1160	118	A6	1320	29	3471	525
5123M	320/85-24 8 PR	TT	315	1160	118	A6	1320	29	3471	525
5125	12.4-24 12PR	TT	315	1160	124	A6	1600	35	3471	525
5125M	320/85-24 12PR	TT	315	1160	124	A6	1600	35	3471	525
5132	13.6-24 6PR	TT	345	1210	120	A6	1400	22	3613	545
5133	13.6-24 8PR	TT	345	1210	123	A6	1550	28	3613	545
5135	13.6-24 12PR	TT	345	1210	129	A6	1850	34	3613	545
5142	14.9-24 6PR	TT	378	1265	125	A6	1650	20	3768	567
5143	14.9-24 8PR	TT	378	1265	128	A6	1800	26	3768	567
5143M	380/85-24 8PR	TT	378	1265	128	A6	1800	26	3768	567
5144	14.9-24 10PR	TT	378	1265	131	A6	1950	30	3768	567
5144M	380/85-24 10PR	TT	378	1265	131	A6	1950	30	3768	567
5146	14.9-24 14PR	TT	378	1265	137	A6	2300	38	3768	567
5195	15.5/80-24 12PR	TL	394	1260	157	A6	4125	44	3754	565
5197	15.5/80-24 16PR	TL	394	1260	163	A6	4875	58	3754	565
5053	16.9-24 8PR	TT	429	1335	133	A6	2060	25	3966	595
5054	16.9-24 10PR	TT	429	1335	136	A6	2240	29	3966	595
5056	16.9-24 14PR	TT	429	1335	141	A6	2575	35	3966	595
5184	14.9-26 10PR	TT	378	1315	133	A6	2060	30	3926	592
5186	14.9-26 14PR	TT	378	1315	140	A6	2500	39	3926	592
5154	18.4-26 10PR	TT	467	1461	142	A6	2650	26	4338	650
5157	18.4-26 16PR	TT	467	1461	153	A6	3650	44	4338	650
5202	11.2-28 6PR	TT	284	1205	112	A6	1120	26	3630	553
5203	11.2-28 8PR	TT	284	1205	118	A6	1320	34	3630	553
5212	12.4-28 6PR	TT	315	1260	117	A6	1285	25	3786	575
5213	12.4-28 8PR	TT	315	1260	125	A6	1650	30	3786	575
5213M	320/85-28 8PR	TT	315	1260	125	A6	1650	30	3786	575
5222	13.6-28 6PR	TT	345	1310	121	A6	1450	23	3927	595
5223	13.6-28 8PR	TT	345	1310	125	A6	1650	29	3927	595
5232	14.9-28 6PR	TT	378	1365	125	A6	1650	20	4083	617
5233	14.9-28 8PR	TT	378	1365	130	A6	1900	26	4083	617
5236	14.9-28 14PR	TT	378	1365	143	A6	2725	40	4083	617
5253	16.9-28 8PR	TT	429	1435	135	A6	2180	24	4281	645
5254	16.9-28 10PR	TT	429	1435	139	A6	2430	29	4281	645
5256	16.9-28 14PR	TT	429	1435	143	A6	2725	34	4281	645
5303	14.9-30 8PR	TT	378	1415	132	A6	2000	26	4240	642
5304	14.9-30 10PR	TT	378	1415	136	A6	2240	29	4240	642
5313	16.9-30 8PR	TT	429	1485	137	A6	2300	25	4438	670
5314	16.9-30 10PR	TT	429	1485	144	A6	2800	28	4438	670
5316	16.9-30 14PR	TT	429	1485	150	A6	3350	34	4438	670
5316M	420/85-30 14PR	TT	429	1485	150	A6	3350	34	4438	670
5323	18.4-30 8PR	TT	467	1550	139	A6	2430	20	4622	696





**REAR  
TRACTOR TYRES**

**KNK50**

- High traction
- Easy movement ability with anti-ground feature
- Preventing clusters in the center and sidewalls during movement
- Facilitating releasing of muds thanks to windowed blocks

Inflated Unloaded Dimensions

Load & Pressure

Product Code	Tyre Size / Ply Rating	TT/TL	Inflated Unloaded Dimensions		Load Index	Speed Index	Load & Pressure			
			Section Width (mm)	Overall Diameter (mm)			Tyre Load Capacity (Kg)	Tyre Pressure At Max. Load (Psi)	Dynamic Rolling Circumference (mm)	Static Loaded Radius (mm)
5323M	420/85-30 8PR	TT	467	1550	139	A6	2430	20	4622	696
5324	18.4-30 10PR	TT	467	1550	145	A6	2900	26	4622	696
5324M	460/85-30 10PR	TT	467	1550	145	A6	2900	26	4622	696
5326	18.4-30 14PR	TT	467	1550	154	A6	3750	40	4622	696
5326M	460/85-30 14PR	TT	467	1550	154	A6	3750	40	4622	696
5413	8.3-32 8PR	TT	211	1195	111	A6	1090	46	3634	559
5423	9.5-32 8PR	TT	241	1250	115	A6	1215	39	3790	581
5433	12.4-32 8PR	TT	315	1360	125	A6	1650	32	4101	625
5514	16.9-34 10PR	TT	429	1585	142	A6	2650	29	4753	720
5514M	420/85-34 10PR	TT	429	1585	142	A6	2650	29	4753	720
5516	16.9-34 14PR	TT	429	1585	148	A6	3150	37	4753	720
5516M	420/85-34 14PR	TT	429	1585	148	A6	3150	37	4753	720
5524	18.4-34 10PR	TT	467	1650	146	A6	3000	26	4937	746
5526	18.4-34 14PR	TT	467	1650	155	A6	3875	40	4937	746
5602	12.4-36 6PR	TT	315	1465	121	A6	1450	24	4429	677
5603	12.4-36 8PR	TT	315	1465	126	A6	1700	29	4429	677
5612	13.6-36 6PR	TT	345	1515	125	A6	1650	23	4571	697
5613	13.6-36 8PR	TT	345	1515	129	A6	1850	29	4571	697
5643	12.4-38 8PR	TT	315	1515	127	A6	1750	29	4587	703
5703	13.6-38 8PR	TT	345	1565	131	A6	1950	29	4728	723
5704	13.6-38 10PR	TT	345	1565	135	A6	2180	33	4728	723
5713	14.00-38 8 PR	TT	345	1565	131	A6	1950	29	4728	723
5714	14.00-38 10PR	TT	345	1565	135	A6	2180	33	4728	723
5724	15.5-38 10PR	TT	394	1570	138	A6	2360	33	4742	725
5524M	460/85-34 10PR	TT	467	1650	146	A6	3000	26	4937	746
5725	15.5-38 12PR	TT	394	1570	141	A6	2575	38	4742	725
5734	16.9-38 10PR	TT	429	1685	145	A6	2900	30	5067	771
5736	16.9-38 14PR	TT	429	1685	152	A6	3550	40	5067	771
5744	18.4-38 10PR	TT	467	1750	147	A6	3075	26	5251	797
5746	18.4-38 14PR	TT	467	1750	154	A6	3750	36	5251	797

**KNK50**



## REAR TRACTOR TYRES

# KNK53

AGRICULTURAL TYRES



- High traction
- Easy movement ability with anti-ground feature
- Preventing clusters in the center and sidewalls during movement
- Facilitating releasing of muds thanks to windowed blocks

### Inflated Unloaded Dimensions

### Load & Pressure

Product Code	Tyre Size / Ply Rating	TT/TL	Section Width	Overall Diameter	Load Index	Speed Index	Tyre Load Capacity	Tyre Pressure At Max. Load	Dynamic Rolling Circumference	Static Loaded Radius
			(mm)	(mm)			(Kg)	(Psi)	(mm)	(mm)
5333K	16.9-30 8PR	TT	429	1485	137	A6	2300	25	4438	670
5334K	16.9-30 10PR	TT	429	1485	144	A6	2800	28	4438	670
5335K	16.9-30 12PR	TT	429	1485	147	A6	3075	31	4438	670
5336K	16.9-30 14PR	TT	429	1485	150	A6	3350	34	4438	670
5755K	15.5-38 12PR	TT	394	1570	141	A6	2575	38	4742	725
5764K	16.9-38 10PR	TT	429	1685	145	A6	2900	30	5067	771

KNK53





**IRRIGATION  
TYRES**

**KNK55**

- High traction
- Easy movement ability with anti-ground feature
- Preventing clusters in the center and sidewalls during movement
- Facilitating releasing of muds thanks to windowed blocks

Inflated Unloaded Dimensions

Load & Pressure

Product Code	Tyre Size / Ply Rating	TT/TL	Inflated Unloaded Dimensions		Load Index	Speed Index	Load & Pressure				
			Section Width	Overall Diameter			Tyre Load Capacity	Tyre Pressure At Max. Load	Dynamic Rolling Circumference	Static Loaded Radius	
			(mm)	(mm)			(Kg)	(Psi)	(mm)	(mm)	
<b>KNK55</b>	5162	14.9-24 6PR (IRRIGATION)	TL	378	1265	123	A6	1550	20	3768	567
	5167	14.9-24 6PR (IRRIGATION)	TT	378	1265	123	A6	1550	20	3768	567
	5168	14.9-24 8 PR (IRRIGATION)	TT	378	1265	127	A6	1750	26	3768	567



**HARVESTER  
TYRES**

**KNK36**

**NEW PRODUCT**

- Easy rolling resistance with five-rib design
- Suitable for both on and off road application
- Designed for field / road transport and soil tillage operations with implement machinery and trailers
- Good flotation properties with a high load capacity at low tire pressure

Inflated Unloaded Dimensions

Load & Pressure

Product Code	Tyre Size / Ply Rating	TT/TL	Inflated Unloaded Dimensions		Load Index	Speed Index	Load & Pressure				
			Section Width	Overall Diameter			Tyre Load Capacity	Tyre Pressure At Max. Load	Dynamic Rolling Circumference	Static Loaded Radius	
			(mm)	(mm)			(Kg)	(Psi)	(mm)	(mm)	
<b>KNK36</b>	4904	9.00-24 10PR	TL	272	1094	124	B	1600	40	3285	499





**HARVESTER  
TYRES**

**KNK48**

AGRICULTURAL TYRES

- Highway, agricultural and off-road tyre with high load bearing capacity and low section
- Minimum ground holding feature thanks to wide circumference channels
- Moving forward easily without submerging thanks to its wide tread pattern
- Resistant structure against punctures thanks to increased tread depth

Inflated Unloaded Dimensions

Load & Pressure

Product Code	Tyre Size / Ply Rating	TT/TL	Inflated Unloaded Dimensions		Load Index	Speed Index	Load & Pressure				
			Section Width	Overall Diameter			Tyre Load Capacity	Tyre Pressure At Max. Load	Dynamic Rolling Circumference	Static Loaded Radius	
			(mm)	(mm)							(Kg)
<b>KNK48</b>	4605	10.5/80-18 12PR	TT	274	885	135/123	A8	2180	65	2646	400
	4626	12.5/80-18 14PR	TT	308	965	144/131	A8	2800	63	2872	432
	4647	13.0/65-18 16PR	TT	336	890	144/131	A8	2800	71	2660	402



**HARVESTER  
TYRES**

**KNK50**

- High traction
- Easy movement ability with anti-ground feature
- Preventing clusters in the center and sidewalls during movement
- Facilitating releasing of muds thanks to windowed blocks

Inflated Unloaded Dimensions

Load & Pressure

Product Code	Tyre Size / Ply Rating	TT/TL	Inflated Unloaded Dimensions		Load Index	Speed Index	Load & Pressure				
			Section Width	Overall Diameter			Tyre Load Capacity	Tyre Pressure At Max. Load	Dynamic Rolling Circumference	Static Loaded Radius	
			(mm)	(mm)							(Kg)
<b>KNK50</b>	5178	23.1-26 18PR	TL	587	1605	162	A6	4750	37	4746	708
	6737	18.4-30 16PR	TT	467	1550	158	A6	4250	45	4622	696
	6737M	460/85-30 16PR	TT	467	1550	158	A6	4250	45	4622	696
	5358	23.1-30 18PR	TL	587	1715	160	A6	4500	36	5088	762
	5527	18.4-34 16PR	TT	467	1650	159	A6	4375	45	4937	746
	5757	20.8-38 16PR	TT	528	1840	162	A6	4750	39	5506	833
	5767	20.8-38 16PR	TL	528	1840	162	A6	4750	39	5506	833





**FLOTATION TYRES**

**KNK22**

- Resistant to stone and impacts thanks to its improved base
- General purposed trailer tyre
- Long lasting and economic use
- Excellent performance in highway and land
- Mud-repellent feature thanks to its special pattern, enhanced traction

Inflated Unloaded Dimensions

Load & Pressure

Product Code	Tyre Size / Ply Rating	TT/TL	Inflated Unloaded Dimensions		Load Index	Speed Index	Load & Pressure				
			Section Width (mm)	Overall Diameter (mm)			Tyre Load Capacity (Kg)	Tyre Pressure At Max. Load (Psi)	Dynamic Rolling Circumference (mm)	Static Loaded Radius (mm)	
<b>KNK22</b>	4716	9.00-20 14PR	TT	247	1017	133	A6	2060	81	3035	458



**FLOTATION TYRES**

**KNK25**

- Resistance to stone and impacts thanks to its improved base
- General purpose trailer tyre
- Long lasting and economic use
- Excellent performance in highway and land
- Mud-repellent feature thanks to its special pattern, enhanced traction

Inflated Unloaded Dimensions

Load & Pressure

Product Code	Tyre Size / Ply Rating	TT/TL	Inflated Unloaded Dimensions		Load Index	Speed Index	Load & Pressure				
			Section Width (mm)	Overall Diameter (mm)			Tyre Load Capacity (Kg)	Tyre Pressure At Max. Load (Psi)	Dynamic Rolling Circumference (mm)	Static Loaded Radius (mm)	
<b>KNK25</b>	4425	7.50-16 12PR	TT	214	787	121	A8	1450	72	2353	355
	4706	8.25-20 14PR	TT	234	970	133	A6	2060	90	2902	439



## FLOTATION TYRES

## KNK26



- Resistant to stone and impacts thanks to its improved base
- General purposed trailer tyre
- Long lasting and economic use
- Excellent performance in highway and land
- Mud-repellent feature thanks to its special pattern, enhanced traction

### Inflated Unloaded Dimensions

### Load & Pressure

Product Code	Tyre Size / Ply Rating	TT/TL	Inflated Unloaded Dimensions		Load Index	Speed Index	Load & Pressure			
			Section Width	Overall Diameter			Tyre Load Capacity	Tyre Pressure At Max. Load	Dynamic Rolling Circumference	Static Loaded Radius
			(mm)	(mm)						
4515	9.00-16 12PR	TT	247	865	125	A6	1650	58	2573	387
4516	9.00-16 14PR	TT	247	865	128	A6	1800	67	2573	387

KNK26

## FLOTATION TYRES

## KNK27



- Balanced driving and excellent traction thanks to its special design
- Increased water and mud discharge thanks to surrounded gutters
- Strong frame structure and high wear resistance
- Comfortable driving
- Retreadability feature

### Inflated Unloaded Dimensions

### Load & Pressure

Product Code	Tyre Size / Ply Rating	TT/TL	Inflated Unloaded Dimensions		Load Index	Speed Index	Load & Pressure			
			Section Width	Overall Diameter			Tyre Load Capacity	Tyre Pressure At Max. Load	Dynamic Rolling Circumference	Static Loaded Radius
			(mm)	(mm)						
4505	9.00-16 12PR	TT	247	865	125	A6	1650	58	2573	387
4506	9.00-16 14PR	TT	247	865	128	A6	1800	67	2573	387

KNK27





**FLOTATION TYRES**

**KNK28**

- Convenient to use in asphalt and land thanks to back pattern
- Durable side wall with strong structure
- Soil holding feature with complex tread structure and channels
- Providing straight location to the ground thanks to back design

Inflated Unloaded Dimensions

Load & Pressure

Product Code	Tyre Size / Ply Rating	TT/TL	Inflated Unloaded Dimensions		Load Index	Speed Index	Load & Pressure			
			Section Width	Overall Diameter			Tyre Load Capacity	Tyre Pressure At Max. Load	Dynamic Rolling Circumference	Static Loaded Radius
			(mm)	(mm)			(Kg)	(Psi)	(mm)	(mm)
<b>KNK28</b> 4445	7.50-16 12PR	TT	214	787	121	A8	1450	72	2353	355

**FLOTATION TYRES**

**KNK42**



- High load bearing capacity with strong structure and less soil compression with its wide base
- Anti-ground tread design

Inflated Unloaded Dimensions

Load & Pressure

Product Code	Tyre Size / Ply Rating	TT/TL	Inflated Unloaded Dimensions		Load Index	Speed Index	Load & Pressure			
			Section Width	Overall Diameter			Tyre Load Capacity	Tyre Pressure At Max. Load	Dynamic Rolling Circumference	Static Loaded Radius
			(mm)	(mm)			(Kg)	(Psi)	(mm)	(mm)
<b>KNK42</b> 4215	260/70-15.3(10.0/75-15.3) 12PR	TL	268	753	126	A8	1700	52	2251	340
4236	300/80-15.3(11.5/80-15.3) 14 PR	TL	295	869	141	A8	2575	58	2579	386
4256	12.5/80-15.3 14PR	TL	307	889	142	A8	2650	62	2636	394



## FLOTATION TYRES

## KNK46



- Soil tillage, transport and hay harvesting applications with implement machinery, trailers and hay harvesters/balers
- The special tread compound resulting in exceptional cut and strong tread along with excellent wear resistance on all types of terrains

### Inflated Unloaded Dimensions

### Load & Pressure

Product Code	Tyre Size / Ply Rating	TT/TL	Section Width	Overall Diameter	Load Index	Speed Index	Tyre Load Capacity	Tyre Pressure At Max. Load	Dynamic Rolling Circumference	Static Loaded Radius
			(mm)	(mm)			(Kg)	(Psi)	(mm)	(mm)
			4566	500/50-17 14PR			TL	503	932	149
4568	500/50-17 18PR	TL	503	932	157	A8	4125	70	2771	416

KNK46

## FLOTATION TYRES

## KNK48



- Highway, agricultural and off-road tyre with high load bearing capacity and low section
- Minimum ground holding feature thanks to wide circumference channels
- Moving forward easily without submerging thanks to its wide tread pattern
- Resistant structure against punctures thanks to increased tread depth

### Inflated Unloaded Dimensions

### Load & Pressure

Product Code	Tyre Size / Ply Rating	TT/TL	Section Width	Overall Diameter	Load Index	Speed Index	Tyre Load Capacity	Tyre Pressure At Max. Load	Dynamic Rolling Circumference	Static Loaded Radius
			(mm)	(mm)			(Kg)	(Psi)	(mm)	(mm)
			4365	10.0/75-15.3(260/70-15.3) 12PR			TL	264	760	126
4366	10.0/75-15.3(260/70-15.3) 14PR	TL	264	760	130	A8	1900	80	2271	343
4376	11.5/80-15.3(300/80-15.3) 14PR	TL	290	845	139	A8	2430	69	2511	377
4386	12.5/80-15.3(320/80-15.3) 14PR	TL	307	889	142	A8	2650	62	2636	394
4525	10.5/65-16(265/65-16) 12PR	TT	274	755	126	A8	1700	65	2262	343

KNK48



FLOTATION TYRES

**KNK52**



- High load bearing capacity with low section off-road and agricultural tyre
- Holding features for dry and wet grounds thanks to its pattern

Inflated Unloaded Dimensions

Load & Pressure

Product Code	Tyre Size / Ply Rating	TT/TL	Inflated Unloaded Dimensions		Load Index	Speed Index	Load & Pressure				
			Section Width	Overall Diameter			Tyre Load Capacity	Tyre Pressure At Max. Load	Dynamic Rolling Circumference	Static Loaded Radius	
			(mm)	(mm)			(Kg)	(Psi)	(mm)	(mm)	
<b>KNK52</b>	4335	10.0/75-15.3 12PR	TL	264	760	126	A8	1700	68	2271	343
	4346	11.5/80-15.3 14PR	TL	290	845	139	A8	2430	69	2511	377
	4356	12.5/80-15.3 14PR	TL	307	889	142	A8	2650	62	2636	394

FLOTATION TYRES

**KNK56**



- Extra strong against stretching thanks to strong frame structure
- Flexibility and deep tread profile

Inflated Unloaded Dimensions

Load & Pressure

Product Code	Tyre Size / Ply Rating	TT/TL	Inflated Unloaded Dimensions		Load Index	Speed Index	Load & Pressure				
			Section Width	Overall Diameter			Tyre Load Capacity	Tyre Pressure At Max. Load	Dynamic Rolling Circumference	Static Loaded Radius	
			(mm)	(mm)			(Kg)	(Psi)	(mm)	(mm)	
<b>KNK56</b>	4397	12.5/80-15.3 16PR	TL	307	889	144	A8	2800	71	2636	394
	4418	400/60-15.5 18PR	TL	404	874	151	A8	3450	90	2595	389
	4847	550/60-22.5 16PR	TL	543	1244	154	A8	3750	41	3697	555



**IMPLEMENT  
TYRES**

**KNK42**



- *Low rolling resistance*
- *High comfort*
- *Preventing skidding thanks to its special pattern*
- *Low soil compact feature thanks to its wide base*

**Inflated Unloaded Dimensions**

**Load & Pressure**

Product Code	Tyre Size / Ply Rating	TT/TL	Inflated Unloaded Dimensions		Load Index	Speed Index	Load & Pressure			
			Section Width	Overall Diameter			Tyre Load Capacity	Tyre Pressure At Max. Load	Dynamic Rolling Circumference	Static Loaded Radius
			(mm)	(mm)						
<b>KNK42</b> 1774	10.0/80-12 10PR	TL	261	671	116	A8	1250	57	1993	299

**IMPLEMENT  
TYRES**

**KNK48**



- *High tread depth*
- *Low rolling resistance*
- *High comfort*
- *Low soil compact feature thanks to its wide base*

**Inflated Unloaded Dimensions**

**Load & Pressure**

Product Code	Tyre Size / Ply Rating	TT/TL	Inflated Unloaded Dimensions		Load Index	Speed Index	Load & Pressure			
			Section Width	Overall Diameter			Tyre Load Capacity	Tyre Pressure At Max. Load	Dynamic Rolling Circumference	Static Loaded Radius
			(mm)	(mm)						
<b>KNK48</b> 1764	10.0/80-12 10PR	TL	264	710	116	A8	1250	57	2103	314





**IMPLEMENT  
TYRES**

**KNK50**

- High traction
- Easy movement ability with anti-ground feature
- Preventing clusters in the center and sidewalls during movement
- Facilitating releasing of muds thanks to windowed blocks

**Inflated Unloaded Dimensions**

**Load & Pressure**

Product Code	Tyre Size / Ply Rating	TT/TL	Inflated Unloaded Dimensions		Load Index	Speed Index	Load & Pressure				
			Section Width	Overall Diameter			Tyre Load Capacity	Tyre Pressure At Max. Load	Dynamic Rolling Circumference	Static Loaded Radius	
			(mm)	(mm)							(Kg)
<b>KNK50</b>	1812	6.50/80-15 6PR	TT	163	663	96	A6	710	52	1994	303

**IMPLEMENT  
TYRES**

**KNK52**



- High load bearing capacity with low section off-road and agricultural tyre
- Holding features for dry and wet grounds thanks to its pattern

**Inflated Unloaded Dimensions**

**Load & Pressure**

Product Code	Tyre Size / Ply Rating	TT/TL	Inflated Unloaded Dimensions		Load Index	Speed Index	Load & Pressure				
			Section Width	Overall Diameter			Tyre Load Capacity	Tyre Pressure At Max. Load	Dynamic Rolling Circumference	Static Loaded Radius	
			(mm)	(mm)							(Kg)
<b>KNK52</b>	1501	4.50-10 4PR	TT	124	490	49	A6	185	30	1465	221
	1611	5.00-12 4PR	TT	145	580	62	A6	265	32	1736	262
	1732	7.00-12 6PR	TT	200	683	83	A6	487	36	2027	304
	1752	6.50/80-13 6PR	TT	170	640	82	A6	475	52	1913	289



## IMPLEMENT TYRES

## KNK54



- High traction ability thanks to its angle blocks
- Easy movement ability thanks to anti-ground base design
- Preventing clusters in the center and sidewalls during movement of tractor thanks to its open design in center
- Facilitating releasing of muds thanks to windowed blocks

### Inflated Unloaded Dimensions

### Load & Pressure

Product Code	Tyre Size / Ply Rating	TT/TL	Inflated Unloaded Dimensions		Load Index	Speed Index	Load & Pressure			
			Section Width	Overall Diameter			Tyre Load Capacity	Tyre Pressure At Max. Load	Dynamic Rolling Circumference	Static Loaded Radius
			(mm)	(mm)			(Kg)	(Psi)	(mm)	(mm)
<b>KNK54</b> 1702	6.50/80-12 6PR	TT	163	588	80	A6	450	52	1758	266

## IMPLEMENT TYRES

## KNK140



- Proper use in lands and gardens
- Strong and robust structure
- Preventing skidding thanks to its special pattern
- Long lasting and economic use
- Optimum performance with small-type gardening and agriculture vehicles

### Inflated Unloaded Dimensions

### Load & Pressure

Product Code	Tyre Size / Ply Rating	TT/TL	Inflated Unloaded Dimensions		Load Index	Speed Index	Load & Pressure			
			Section Width	Overall Diameter			Tyre Load Capacity	Tyre Pressure At Max. Load	Dynamic Rolling Circumference	Static Loaded Radius
			(mm)	(mm)			(Kg)	(Psi)	(mm)	(mm)
<b>KNK140</b> 1802	5.00-15 6PR	TT	145	655	76	A6	400	50	1972	300



NEW PRODUCT



- Specially designed for forestry application
- Special tread and sidewall compound provides maximum tire life against cut and crack resistance
- Excellent puncture resistance thanks to strong breaker construction shoulder to shoulder,
- Lower lug angle providing excellent grip and self cleaning properties for logging operations
- Tie-bar on the central lugs protects the tire against deep impacts.

Inflated Unloaded Dimensions

Load & Pressure

Product Code	Tyre Size / Ply Rating	TT/TL	Inflated Unloaded Dimensions		Load Index	Speed Index	Load & Pressure			
			Section Width	Overall Diameter			Tyre Load Capacity	Tyre Pressure At Max. Load	Dynamic Rolling Circumference	Static Loaded Radius
			(mm)	(mm)			(Kg)	(Psi)	(mm)	(mm)
5507	18.4-26 16PR	TL	467	1461	650	4338	153	A6	3650	44

FRS40







# **INDUSTRIAL, EM, OTR TYRES**



**OR71      KNK44      KNK65      KNK66**

---

**IND80      IND85      IND88**

---

**KNK70      KNK72      KNK74**

---

**KNK77      KNK88      KNK40**

**ÖZKA**









**RADIAL EM  
TYRES**

**OR71**

- High traction and comfort
- Longer service life
- Comfortable drive due to flexible sidewall structure
- Strong carcass structure
- Resistance to fatigue due to wide shoulder and blocks
- Strong tread compound for cut-resistance
- High performance due to wide base track
- Mud repellent feature due to specially designed tread pattern

Inflated Unloaded Dimensions

Load & Pressure

Product Code	Tyre Size / Ply Rating	TT/TL	Section Width	Overall Diameter	Load Index	Speed Index	Tyre Load Capacity	Tyre Pressure At Max. Load	Dynamic Rolling Circumference	Static Loaded Radius
			(mm)	(mm)			(Kg)	(Psi)	(mm)	(mm)
R702446071	460/70 R24	TL	455	1255	159/159	A8/B	4375/4375	58	3740	563
R8024440	440/80 R24	TL	450	1320	154/154	A8/B	3750/3750	46	3924	589
R8028440	440/80 R28	TL	450	1420	156/156	A8/B	4000/4000	46	4238	639

**OR71**

**EM / INDUSTRIAL  
TYRES**

**KNK44**



- Resistance to stone cuts, cracks and breaks
- Long wear-life

Inflated Unloaded Dimensions

Load & Pressure

Product Code	Tyre Size / Ply Rating	TT/TL	Section Width	Overall Diameter	Load Index	Speed Index	Tyre Load Capacity	Tyre Pressure At Max. Load	Dynamic Rolling Circumference	Static Loaded Radius
			(mm)	(mm)			(Kg)	(Psi)	(mm)	(mm)
6247	10.00-20 16PR	TT	283	1084	146/143	B	3000	109	3225	484
6257	10.00-20 16PR	TL	283	1084	146/143	B	3000	109	3225	484

**KNK44**



**EM / INDUSTRIAL  
TYRES**

**KNK65**



- Long wear-life
- Cracking / fatigue resistance at treads
- Maximum traction
- Increased sidewall protection

**Inflated Unloaded Dimensions**

**Load & Pressure**

Product Code	Tyre Size / Ply Rating	TT/TL	Section Width	Overall Diameter	Load Index	Speed Index	Tyre Load Capacity	Tyre Pressure At Max. Load	Dynamic Rolling Circumference	Static Loaded Radius
			(mm)	(mm)						
6015	10-16.5 12PR	TL	282	775	138	A3	2360	84	2323	352
6036	12-16.5 14PR	TL	320	846	148	A3	3150	90	2524	380

**KNK65**

**INDUSTRIAL, EM, OTR TYRES**

**EM / INDUSTRIAL  
TYRES**

**KNK66**



- High traction and comfort
- Designed compatible with scrap operations and recycling process
- Excellent maneuverability at high tonnage due to reinforced shoulder blocks.
- Comfortable drive due to flexible sidewall structure
- Reinforced back structure
- Longer life due to improved back structure
- Wear resistance due to special back combination

**Inflated Unloaded Dimensions**

**Load & Pressure**

Product Code	Tyre Size / Ply Rating	TT/TL	Section Width	Overall Diameter	Load Index	Speed Index	Tyre Load Capacity	Tyre Pressure At Max. Load	Dynamic Rolling Circumference	Static Loaded Radius
			(mm)	(mm)						
6025	10-16.5 12PR	TL	282	775	138	A3	2360	84	2323	352
6046	12-16.5 14 PR	TL	320	846	148	A3	3150	90	2524	380
6146	12.5/80-18 14PR	TL	305	983	146	A8	3000	62	2923	439

**KNK66**





- High traction and excellent self-cleaning feature in any conditions thanks to deep and corrugated tread structure
- Resistance to stone cuts, cracks and breaks
- Higher wear and root resistance thanks to using bar in the center
- Resistance to any kind of impacts
- Long wear-life

Inflated Unloaded Dimensions

Load & Pressure

Product Code	Tyre Size / Ply Rating	TT/TL	Inflated Unloaded Dimensions		Load Index	Speed Index	Load & Pressure			
			Section Width (mm)	Overall Diameter (mm)			Tyre Load Capacity (Kg)	Tyre Pressure At Max. Load (Psi)	Dynamic Rolling Circumference (mm)	Static Loaded Radius (mm)
6055	10-16.5 12PR	TL	256	793	138	A3	2360	84	2374	359
6076	12-16.5 14PR	TL	297	858	148	A3	3150	90	2558	385
6115	10.5/80-18 12PR	TL	271	892	135	A8	2180	62	2666	403
6156	12.5/80-18 14PR	TL	285	955	146	A8	3000	62	2844	428
6277	16.0/70-20 16PR	TL	385	1091	166	A2	5300	65	3244	487
6277M	405/70-20 16PR	TL	385	1091	166	A2	5300	65	3244	487
6287	15.5/80-24 16PR	TL	412	1269	162	A8	4750	72	3780	569
6377	16.0/70-24 16PR	TL	418	1200	169	A2	5800	65	3584	541
6377M	405/70-24 16PR	TL	418	1200	169	A2	5800	65	3584	541
6397	16.9-24 16PR	TL	429	1310	154	A8	3750	46	3895	585
6397M	440/80-24 16PR	TL	429	1310	154	A8	3750	46	3895	585
6566	17.5L-24 14PR	TL	475	1277	154	A8	3750	46	3802	572
6816	15.5-25 14PR	TL	400	1286	173	A2	6500	68	3836	578
6516	18.4-26 14PR	TL	467	1425	160	A8	4500	42	4237	636
6616	16.9-28 14PR	TL	429	1410	156	A8	4000	43	4210	635
6616M	440/80-28 14PR	TL	429	1410	156	A8	4000	43	4210	635
6957	16.9-30 16PR	TL	418	1466	156	A8	4000	47	4384	663



## EM / INDUSTRIAL TYRES

## IND85



- High traction and comfort
- Resistance to any kind of impacts with its back structure
- Comfortable drive due to flexible sidewall structure
- Reinforced bead design
- Reinforced sidewall structure
- Excellent maneuverability at high tonnage due to flexible sidewall structure
- Longer life with its reinforced tread pattern
- Strong tread compound against punctures and impacts
- Longer life due to increased tread number and improved tread depth

### Inflated Unloaded Dimensions

### Load & Pressure

IND85	Product Code	Tyre Size / Ply Rating	TT/TL	Section Width	Overall Diameter	Load Index	Speed Index	Tyre Load Capacity	Tyre Pressure At Max. Load	Dynamic Rolling Circumference	Static Loaded Radius
				(mm)	(mm)			(Kg)	(Psi)	(mm)	(mm)
	6136	12.5/80-18 14PR	TL	304	965	146	A8	3000	62	2872	432

## EM / INDUSTRIAL TYRES

## IND88



- Robust industrial pattern with higher resistance to puncture and tread wear
- Higher traction with wide pattern design at the center lug
- Reinforced bead design

### Inflated Unloaded Dimensions

### Load & Pressure

IND88	Product Code	Tyre Size / Ply Rating	TT/TL	Section Width	Overall Diameter	Load Index	Speed Index	Tyre Load Capacity	Tyre Pressure At Max. Load	Dynamic Rolling Circumference	Static Loaded Radius
				(mm)	(mm)			(Kg)	(Psi)	(mm)	(mm)
	6166	12.5/80-18 14PR	TL	308	987	146	A8	3000	62	2934	441
6176	340/80-18 14PR	TL	343	1001	146	A8	3000	62	2974	446	
6187	16.0/70-20 16PR	TL	385	1091	166	A2	5300	65	3244	487	
6196	14.5-20 14PR	TL	355	1095	143	D	2725	51	3256	489	



## EM / INDUSTRIAL TYRES

## KNK70



- Strong and durable thanks to excellent design
- Its compound resistant to wear, and its blocks resistant to heavy conditions with long maintenance periods
- Minimizing stretching at base with its strong blocks in its center

### Inflated Unloaded Dimensions

### Load & Pressure

Product Code	Tyre Size / Ply Rating	TT/TL	Inflated Unloaded Dimensions		Load Index	Speed Index	Load & Pressure				
			Section Width (mm)	Overall Diameter (mm)			Tyre Load Capacity (Kg)	Tyre Pressure At Max. Load (Psi)	Dynamic Rolling Circumference (mm)	Static Loaded Radius (mm)	
KNK70	6761	14.00-24 24PR	TL	375	1360	186	A2	9500	123	4037	605
	6765	14.00-24 32PR	TL	375	1360	190	A2	10600	145	4037	605
	6419	17.5-25 20PR	TL	455	1371	181	A2	8250	83	4076	612
	6431	20.5-25 24PR	TL	531	1527	189	A2	10300	76	4517	674
	6451	23.5-25 24PR	TL	604	1625	196	A2	12500	68	4794	714
	6473	26.5-25 28PR	TL	702	1785	203	A2	15500	68	5246	778
	6475	26.5-25 32PR	TL	702	1785	206	A2	17000	79	5246	778
	6495	29.5-25 32PR	TL	758	1923	210	A2	19000	72	5637	833

## EM / INDUSTRIAL TYRES

## KNK72



- High traction and excellent self-cleaning feature in any conditions thanks to deep and corrugated tread structure
- Resistance to stone cuts, cracks and breaks
- Higher wear and root resistance thanks to using bar in the center
- Resistance to any kind of impacts
- Long wear-life

### Inflated Unloaded Dimensions

### Load & Pressure

Product Code	Tyre Size / Ply Rating	TT/TL	Inflated Unloaded Dimensions		Load Index	Speed Index	Load & Pressure				
			Section Width (mm)	Overall Diameter (mm)			Tyre Load Capacity (Kg)	Tyre Pressure At Max. Load (Psi)	Dynamic Rolling Circumference (mm)	Static Loaded Radius (mm)	
KNK72	6337	13.00-24 16PR	TL	335	1280	151	A8	3450	58	3811	573
	6357	14.00-24 16PR	TL	382	1354	153	A8	3650	54	4020	603



## EM / INDUSTRIAL TYRES

## KNK74



- Strong structure
- Increased tread depth and tread pattern providing optimum traction in muddy fields

### Inflated Unloaded Dimensions

### Load & Pressure

Product Code	Tyre Size / Ply Rating	TT/TL	Inflated Unloaded Dimensions		Load Index	Speed Index	Load & Pressure			
			Section Width	Overall Diameter			Tyre Load Capacity	Tyre Pressure At Max. Load	Dynamic Rolling Circumference	Static Loaded Radius
			(mm)	(mm)						
6297	16.00-24 16PR	TL	432	1493	160	A8	4000	47	4413	658

KNK74

INDUSTRIAL, EM, OTR TYRES

## COMPACTOR TYRES

## KNK77



- Wide shoulder and base width, blocked design
- High traction ability
- Anti-wear future thanks to its pattern appropriate for agricultural, industrial and off-road use
- Consisting durable blocks
- Easy use in soft grounds
- Balanced driving and easy control thanks to wide shoulder and blocks

### Inflated Unloaded Dimensions

### Load & Pressure

Product Code	Tyre Size / Ply Rating	TT/TL	Inflated Unloaded Dimensions		Load Index	Speed Index	Load & Pressure			
			Section Width	Overall Diameter			Tyre Load Capacity	Tyre Pressure At Max. Load	Dynamic Rolling Circumference	Static Loaded Radius
			(mm)	(mm)						
6536	23.1-26 14PR	TL	587	1580	166	A8	5300	33	4675	698

KNK77



## COMPACTOR TYRES

## KNK88



- *Compressing ability for asphalt with its plane surfaced tread pattern*
- *Stable operation feature thanks to strong frame at sidewalls*

### Inflated Unloaded Dimensions

### Load & Pressure

Product Code	Tyre Size / Ply Rating	TT/TL	Section Width	Overall Diameter	Load Index	Speed Index	Tyre Load Capacity	Tyre Pressure At Max. Load	Dynamic Rolling Circumference	Static Loaded Radius
			(mm)	(mm)			(Kg)	(Psi)	(mm)	(mm)
6225	9.00-20 12PR	TT	256	1002	157	A2	4125	94	2993	452
6262	11.00-20 16PR	TT	290	1040	168	A2	5600	107	3100	467

**KNK88**

## FORKLIFT TYRES

## KNK40



- *High kilometer performance thanks to its special structure*
- *Comfortable driving thanks to excellent traction*
- *Maximum traction*
- *Long wear-life*
- *Resistance to any kind of impacts*

### Inflated Unloaded Dimensions

### Load & Pressure

Product Code	Tyre Size / Ply Rating	TT/TL	Section Width	Overall Diameter	Load Index	Speed Index	Tyre Load Capacity	Tyre Pressure At Max. Load	Dynamic Rolling Circumference	Static Loaded Radius
			(mm)	(mm)			(Kg)	(Psi)	(mm)	(mm)
9105	6.00-9 12PR	TT	165	544	121	A5	1450	145	1610	240
9205	6.50-10 12PR	TT	181	592	125	A5	1650	110	1754	262
9306	7.00-12 14PR	TT	195	674	134	A5	2120	110	2001	300
9406	8.15-15 (28*9-15) 14PR	TT	220	710	146	A5	3000	145	2127	322
9418	8.25-15 18PR	TT	240	840	153	A5	3650	145	2495	374

**KNK40**







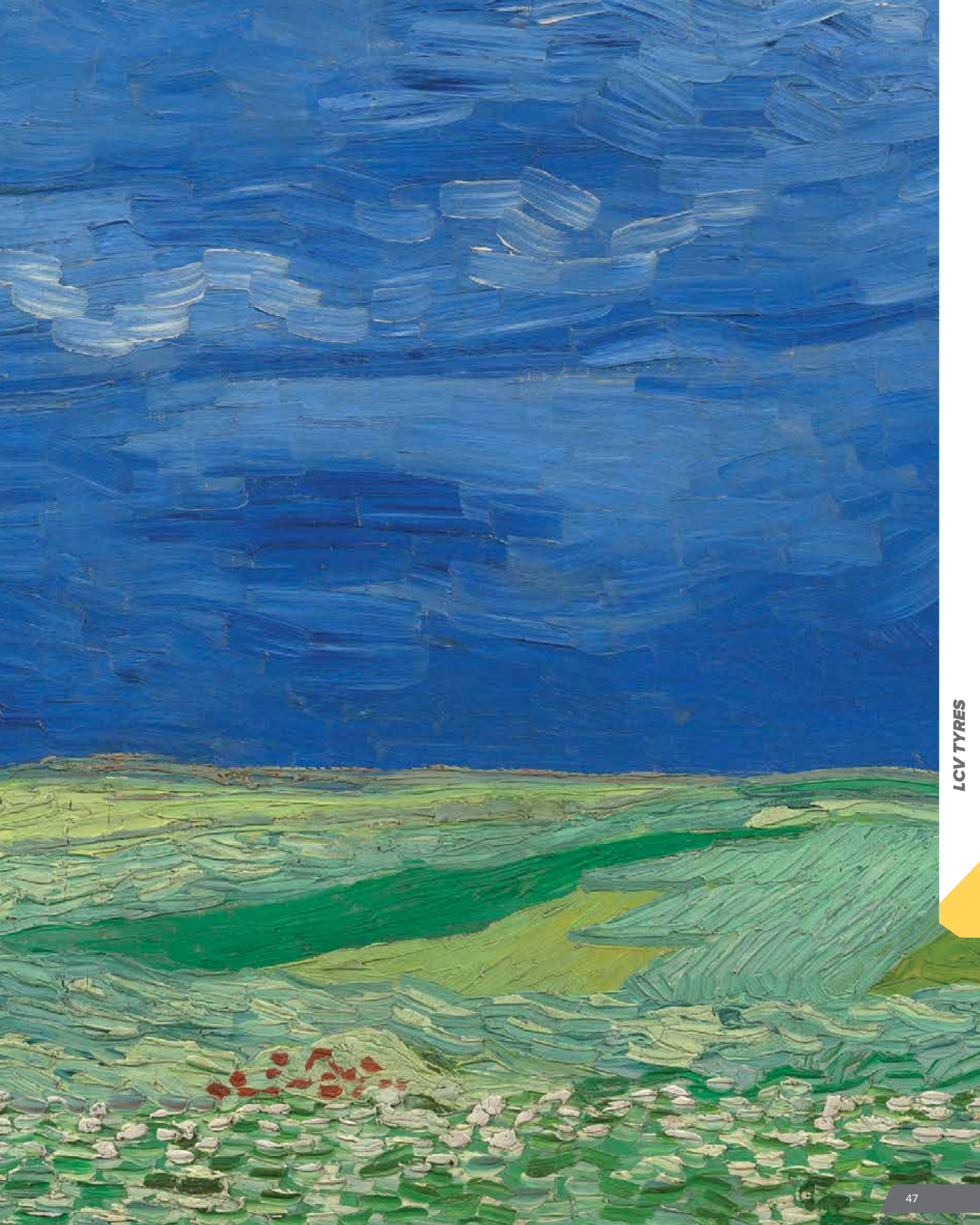
# **LCV TYRES**



**KNK20    KNK24    KNK25    KNK126**

---







## LIGHT TRUCK & MINIBUS TYRES

# KNK20



- Strong frame structure and high wear resistance
- Balanced driving thanks to its corrugated pattern
- Increased water discharge thanks to its corrugated gutters
- Increased road bend ability and excellent traction
- Retreadability feature

### Inflated Unloaded Dimensions

### Load & Pressure

Product Code	Tyre Size / Ply Rating	TT/TL	Inflated Unloaded Dimensions		Load Index	Speed Index	Load & Pressure				
			Section Width	Overall Diameter			Load Capacity Per Axle	Tyre Pressure At Max. Load	Dynamic Rolling Circumference	Static Loaded Radius	
			(mm)	(mm)			(Kg)	(Psi)	(mm)	(mm)	
<b>KNK20</b>	2144	7.50-15C 10PR	TT	235	789	114/112	L	2360/4480	76	2318	344
	2204	6.50-16C 10PR	TT	176	748	108/107	L	2000/3900	73	2216	331
	2304	7.00-16C 10PR	TT	198	785	113/112	L	2300/4480	76	2317	345
	2405	7.50-16C 12PR	TT	210	810	121/120	L	2900/5600	94	2386	355

## LIGHT TRUCK & MINIBUS TYRES

# KNK24



- Balanced driving and excellent traction thanks to its special corrugated pattern
- Increased water and mud resistance thanks to its surrounding gutters
- Strong frame structure and high wear resistance
- Comfortable driving
- Retreadability feature

### Inflated Unloaded Dimensions

### Load & Pressure

Product Code	Tyre Size / Ply Rating	TT/TL	Inflated Unloaded Dimensions		Load Index	Speed Index	Load & Pressure				
			Section Width	Overall Diameter			Load Capacity Per Axle	Tyre Pressure At Max. Load	Dynamic Rolling Circumference	Static Loaded Radius	
			(mm)	(mm)			(Kg)	(Psi)	(mm)	(mm)	
<b>KNK24</b>	2415	7.50-16C 12PR	TT	210	810	121/120	L	2900/5600	94	2386	355



**LIGHT TRUCK & MINIBUS TYRES**

**KNK25**



- Optimum performance in traction and brakes due to special deep back pattern
- Strong frame structure and high wear resistance
- Anti-stone increased water and mud resistance thanks to its surrounding gutters
- Retreadability feature

**Inflated Unloaded Dimensions**

**Load & Pressure**

Product Code	Tyre Size / Ply Rating	TT/TL	Section Width	Overall Diameter	Load Index	Speed Index	Load Capacity Per Axle	Tyre Pressure At Max. Load	Dynamic Rolling Circumference	Static Loaded Radius
			(mm)	(mm)			(Kg)	(Psi)	(mm)	(mm)
2425	7.50-16C 12PR	TT	210	810	121/120	L	2900/5600	94	2386	355

**KNK25**

**LIGHT TRUCK & MINIBUS TYRES**

**KNK126**



- Balanced driving and excellent traction thanks to its special corrugated pattern
- Increased water and mud resistance thanks to its surrounding gutters
- Strong frame structure and high wear resistance
- Comfortable driving
- Retreadability feature

**Inflated Unloaded Dimensions**

**Load & Pressure**

Product Code	Tyre Size / Ply Rating	TT/TL	Section Width	Overall Diameter	Load Index	Speed Index	Load Capacity Per Axle	Tyre Pressure At Max. Load	Dynamic Rolling Circumference	Static Loaded Radius
			(mm)	(mm)			(Kg)	(Psi)	(mm)	(mm)
2154	7.50-15C 10PR	TT	235	786	114/112	L	2360/4480	76	2310	342
2214	6.50-16C 10PR	TT	176	748	108/107	L	2000/3900	73	2216	331
2314	7.00-16C 10PR	TT	198	785	113/112	L	2300/4480	76	2317	345
2435	7.50-16C 12PR	TT	210	810	121/120	L	2900/5600	94	2386	355

**KNK126**

**LCV TYRES**



# ***MPT TYRES***



***KNK10***

***KNK12***

***KNK14***

---

**ÖZKA**







**MILITARY  
TYRES**

**KNK10**



- Wide base, designed for use at asphalt and off-road (land)
- Self-cleaning tread structure in asphalt use
- Suitable for any weather conditions, excellent traction
- High drift endurance due to diagonal tread structure

Inflated Unloaded Dimensions

Load & Pressure

Product Code	Tyre Size / Ply Rating	TT/TL	Inflated Unloaded Dimensions		Load Index	Speed Index	Load & Pressure				
			Section Width	Overall Diameter			Tyre Load Capacity	Tyre Pressure At Max. Load	Dynamic Rolling Circumference	Static Loaded Radius	
			(mm)	(mm)			(Kg)	(Psi)	(mm)	(mm)	
KNK10	7748	14.00-20 18PR	TT	375	1260	160/157	F	4500	100	3722	555
	7749	14.00-20 20PR	TT	375	1260	161/158	F	4625	108	3722	555

**MILITARY  
TYRES**

**KNK12**



- Pattern feature designed for non-road and highway use
- Excellent maneuverability due to nondirectional use feature

Inflated Unloaded Dimensions

Load & Pressure

Product Code	Tyre Size / Ply Rating	TT/TL	Inflated Unloaded Dimensions		Load Index	Speed Index	Load & Pressure				
			Section Width	Overall Diameter			Tyre Load Capacity	Tyre Pressure At Max. Load	Dynamic Rolling Circumference	Static Loaded Radius	
			(mm)	(mm)			(Kg)	(Psi)	(mm)	(mm)	
KNK12	7525	12.5-20 12PR	TT	325	1040	132	F	2000	51	3100	467





- Military tyre for both off the road and highway application
- More resistance with multilayer carcass body across puncture
- Self-cleaning lug design

**Inflated Unloaded Dimensions**

**Load & Pressure**

Product Code	Tyre Size / Ply Rating	TT/TL	Section Width	Overall Diameter	Load Index	Speed Index	Tyre Load Capacity	Tyre Pressure At Max. Load	Dynamic Rolling Circumference	Static Loaded Radius
			(mm)	(mm)			(Kg)	(Psi)	(mm)	(mm)
7423	13.00-18 8PR	TT	354	1125	131	F	1950	43	3324	496

**KNK14**



RIM DIAMETER	EQUIVALENCE TABLE OF INTERCHANGEABILITY FOR RADIAL AND DIAGONAL TYRES								
--------------	---	--	--	--	--	--	--	--	--

16	6.00 # 16	210/80 # 16	240/70 # 16	260/65 # 16					
16	6.50 # 16	260/70 # 16	280/65 # 16						
16	7.50 # 16	210/95 # 16	250/80 # 16	280/70 # 16	300/65 # 16	320/65 # 16			
16	8.25 # 16	300/70 # 16							
18	7.50 # 18	210/95 # 18	250/80 # 18	280/70 # 18	300/65 # 18	320/65 # 18			
18	10.5/80 # 18	300/70 # 18	340/65 # 18						
20	7.50 # 20	280/70 # 20							
20	9.5 # 20	8.00 # 20	250/85 # 20	260/80 # 20	300/70 # 20	340/65 # 20			
20	11.2 # 20	280/85 # 20	320/70 # 20						
20	12.4 # 20	320/85 # 20	340/80 # 20	340/75 # 20	360/70 # 20	420/65 # 20			
20	13.6 # 20	14.9L # 20	380/75 # 20	400/70 # 20	380/70 # 20	440/65 # 20			
20	12.4 # 28	320/85 # 28	360/70 # 28	420/65 # 28					
24	9.5 # 24	240/85 # 24	250/85 # 24	300/70 # 24	360/60 # 24				
24	11.2 # 24	280/85 # 24	320/70 # 24						
24	12.4 # 24	320/85 # 24	360/70 # 24	420/65 # 24					
24	13.6 # 24	340/85 # 24	380/75 # 24	380/70 # 24	400/70 # 24	440/65 # 24			
24	14.9 # 24	380/85 # 24	420/70 # 24	460/70 # 24	480/65 # 24				
24	16.9 # 24	420/85 # 24	480/70 # 24	480/75 # 24	540/65 # 24				
26	16.9 # 26	480/70 # 26	540/65 # 26						
26	18.4 # 26	460/85 # 26	520/70 # 26	580/70 # 26	750/50 # 26				
26	23.1 # 26	28 L # 26	620/75 # 26	650/70 # 26	750/65 # 26				
28	9.5 # 28	240/85 # 28	250/85 # 28	340/65 # 28					
28	11.2 # 28	280/85 # 28	320/70 # 28						
28	13.6 # 28	340/85 # 28	380/70 # 28	440/65 # 28	480/60 # 28				
28	14.9 # 28	380/85 # 28	420/70 # 28	420/75 # 28	480/65 # 28	520/60 # 28			
28	16.9 # 28	420/85 # 28	480/70 # 28	480/75 # 28	540/65 # 28	600/60 # 28			
28	18.4 # 28	540/75 # 28	600/65 # 28						
30	14.9 # 30	380/85 # 30	420/70 # 30						
30	16.9 # 30	420/90 # 30	420/85 # 30	480/70 # 30	480/75 # 30	540/65 # 30	600/60 # 30		
30	18.4 # 30	21L # 30	460/85 # 30	520/70 # 30	600/65 # 30	710/55 # 30			
30	23.1 # 30	620/75 # 30	650/70 # 30	710/65 # 30					
32	8.3 # 32	210/95 # 32							
32	9.5 # 32	230/95 # 32	270/80 # 32	270/75 # 32					
32	12.4 # 32	320/85 # 32							
32	24.5 # 32	650/75 # 32	680/70 # 32	800/60 # 32					
32	30.5 L # 32	710/75 # 32	680/75 # 32	800/65 # 32	850/60 # 32	900/55 # 32	1050/50 # 32		
34	14.9 # 34	380/85 # 34							
34	16.9 # 34	420/85 # 34	480/70 # 34	480/75 # 34	500/70 # 34	540/65 # 34	600/60 # 34		
34	18.4 # 34	460/85 # 34	520/70 # 34	520/75 # 34	540/70 # 34	600/65 # 34	710/55 # 34	800/50 # 34	
34	20.8 # 34	23.1 # 34	620/75 # 34	710/70 # 34	650/65 # 34	710/60 # 34			
36	8.3 # 36	210/95 # 36							
36	12.4 # 36	320/85 # 36							
36	13.6 # 36	340/85 # 36							
36	9.5 # 36	230/95 # 36	270/80 # 36						
36	11.2 # 36	270/95 # 36							
38	9.5 # 38	230/95 # 38							
38	11.2 # 38	270/95 # 38	290/90 # 38						
38	12.4 # 38	320/85 # 38							
38	13.6 # 38	15.5 # 38	340/85 # 38	380/80 # 38	400/75 # 38				
38	14.9 # 38	380/85 # 38							
38	16.9 # 38	420/85 # 38	480/70 # 38	480/75 # 38	540/65 # 38	600/60 # 38			
38	18.4 # 38	460/85 # 38	520/70 # 38	520/75 # 38	600/65 # 38	650/60 # 38			
38	20.8 # 38	520/85 # 38	580/70 # 38	620/70 # 38	650/65 # 38	710/65 # 38	710/60 # 38	850/50 # 38	
42	9.5 # 42	230/95 # 42							
42	11.2 # 42	270/95 # 42	300/85 # 42						
42	12.4 # 42	300/95 # 42							
42	18.4 # 42	460/85 # 42	480/80 # 42	600/65 # 42					
42	20.8 # 42	520/85 # 42	580/70 # 42	620/70 # 42	650/65 # 42	750/60 # 42	710/60 # 42	850/55 # 42	900/50 # 42
44	8.3 # 44	210/95 # 44							
44	9.5 # 44	230/95 # 44							
46	12.4 # 46	270/95 # 46	300/95 # 46	320/90 # 46	340/85 # 46				
46	20.8 # 46	520/85 # 46	650/65 # 46	620/70 # 46					
48	9.5 # 48	230/95 # 48							
48	13.6 # 48	340/85 # 48							

\*\* # "Symbol can be replaced with " R " for radial, "-" or "D" for Diagonal Tires







### **HEADQUARTER / FACTORY**

Mahmutpaşa Mah. Kanalyolu Cad. No:129 41140  
Başiskele / Kocaeli TURKEY  
Tel: +90 262 349 50 00  
info@ozkalastik.com

### **SALES OFFICE / WAREHOUSE**

Karadenizliler Mah. Kullar Başyığıt Cad. No:101  
Başiskele / Kocaeli TURKEY  
Tel: +90 262 349 41 11  
info@ozkalastik.com

 ozkalastik  ozkalastik  ozkalastik

[www.ozkalastik.com](http://www.ozkalastik.com)